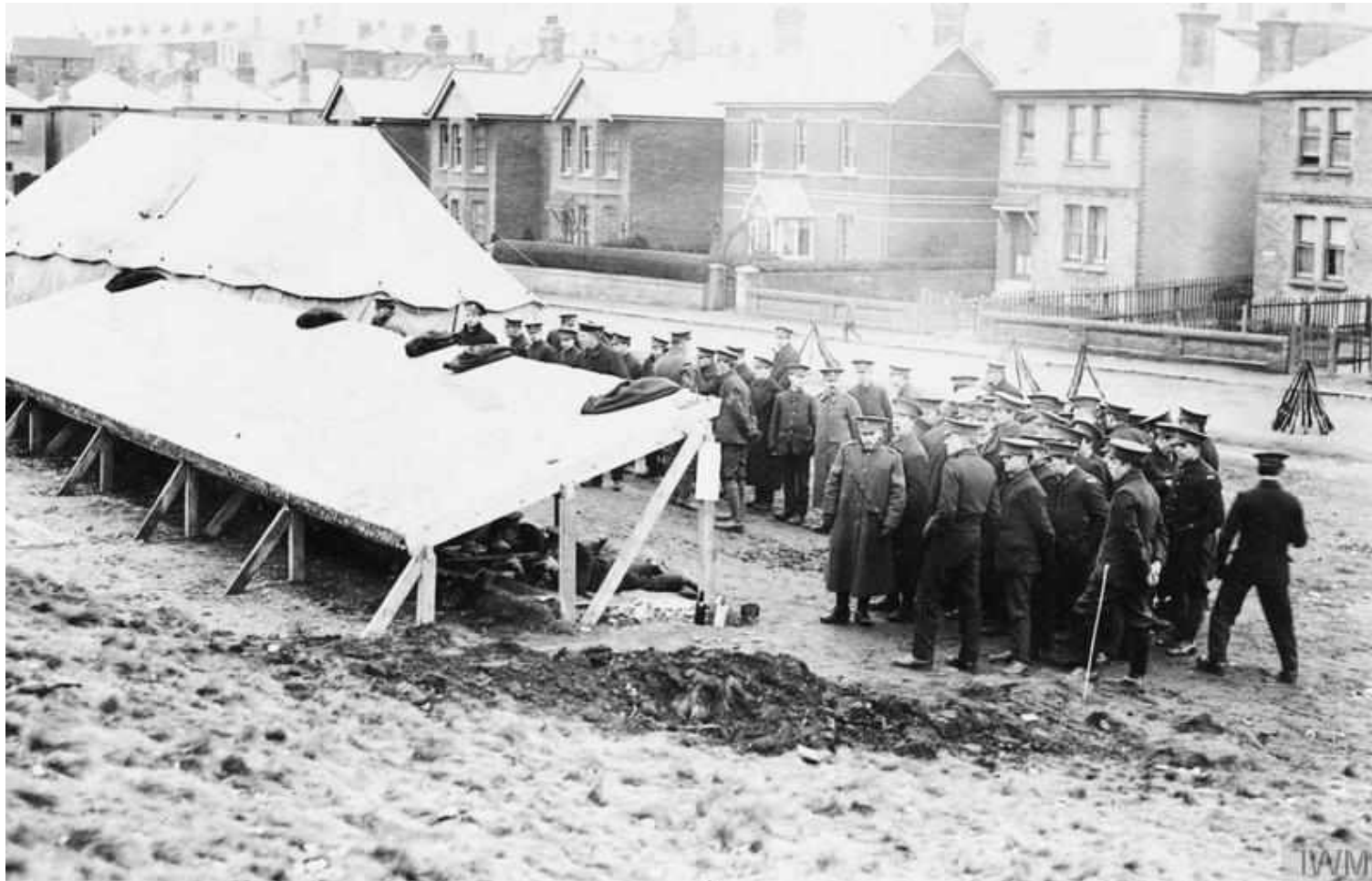


## A Great War rifle range - in the heart of Winton!



Our group member Elaine Davies uncovered this lovely photo - along with the other two shown below - on the Imperial War Museum website...

(you can visit the actual page here: <http://www.iwm.org.uk/collections/item/object/205286895> )

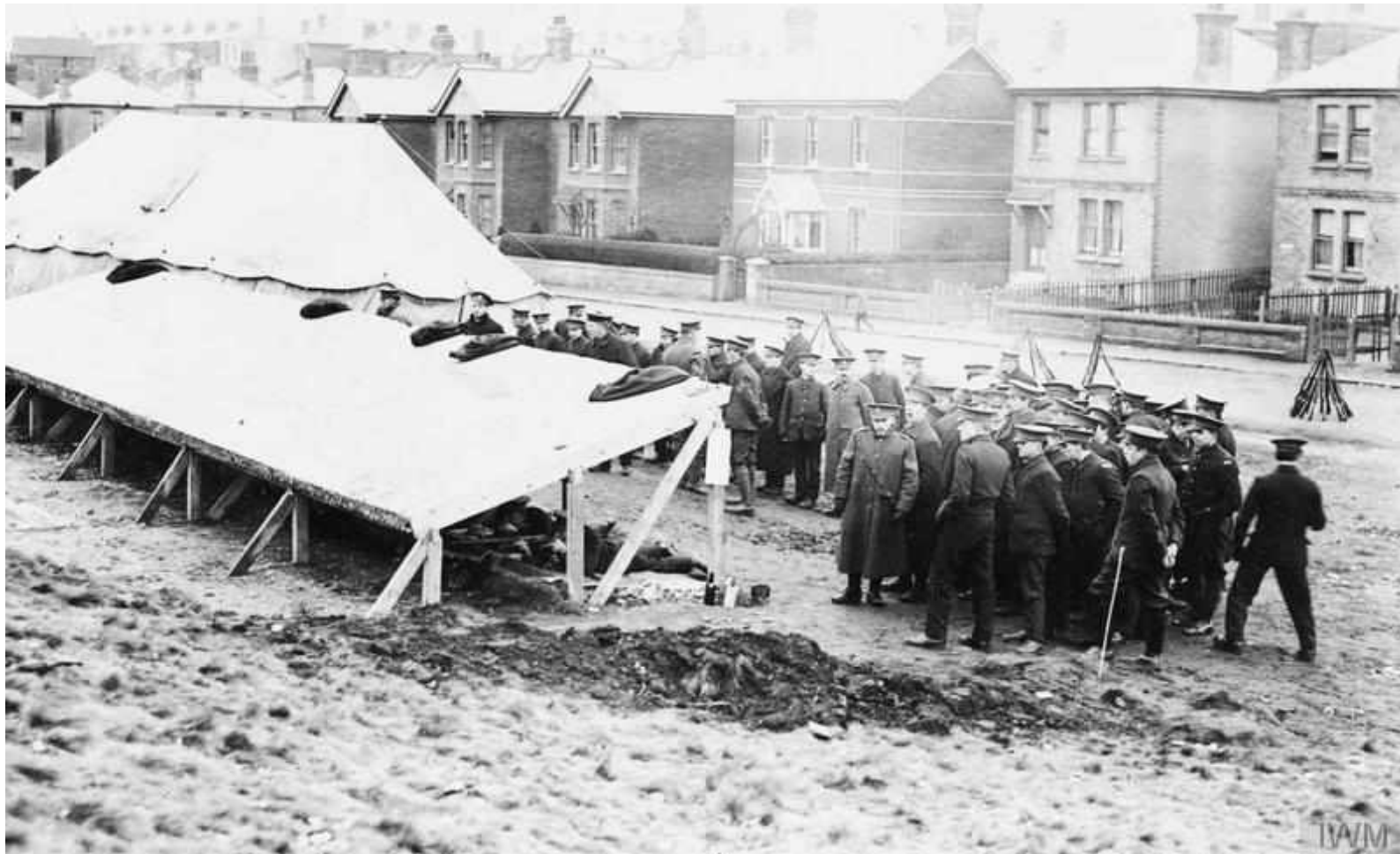
***EDIT: Feb 2016. The photograph has now been corrected on the IWM website (see below for details)***



Photograph taken in the other direction - what the shooters could see.....

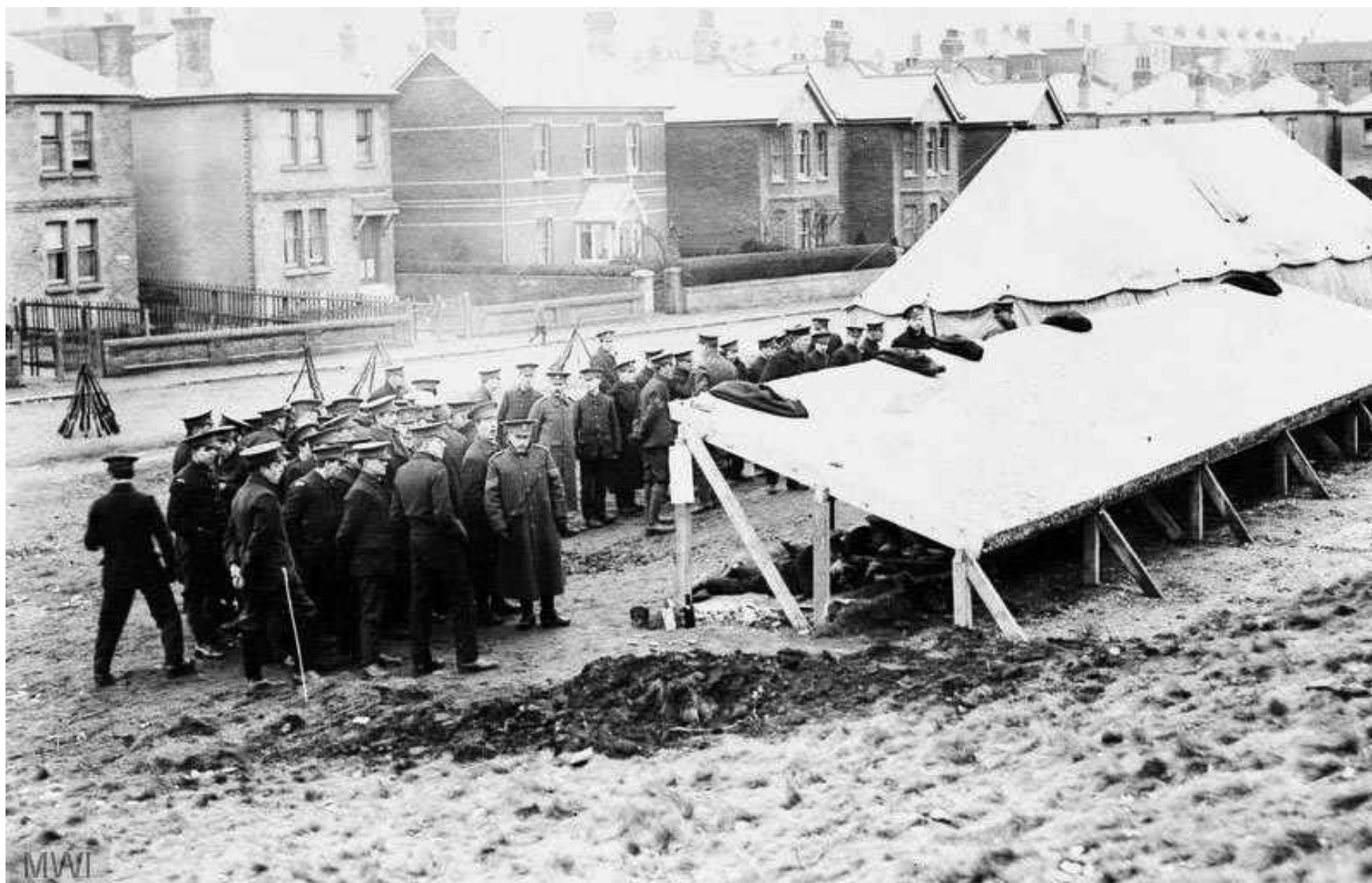


Not sure I'd like to be the either of the chaps strolling along the top in the distance.  
Clearly a different attitude to health and safety in wartime (understandably!)



The notes accompanying this photo read :  
***'Soldiers in training, possibly the 8th Battalion, Welsh Regiment (The Pioneers) -  
during training, firing on the miniature range at Winton, Bournemouth'.***

With the houses behind - and those in the distance - it was clearly in the middle of a residential area... but where?  
It's a bit difficult to locate - until you reverse the image.....



Now that makes it a lot easier to find! ... It was in **Portland Rd**, between Ripon Rd and Muscliffe Rd...see below...





The distinctive layout of the houses across the road confirms the location....and the view taken in the other direction (see below) shows just how steeply the land behind rises. Useful if you're firing rifle shots towards the town centre! Must have been pretty noisy and unpleasant for the local residents though. Still, there was a war going on!

