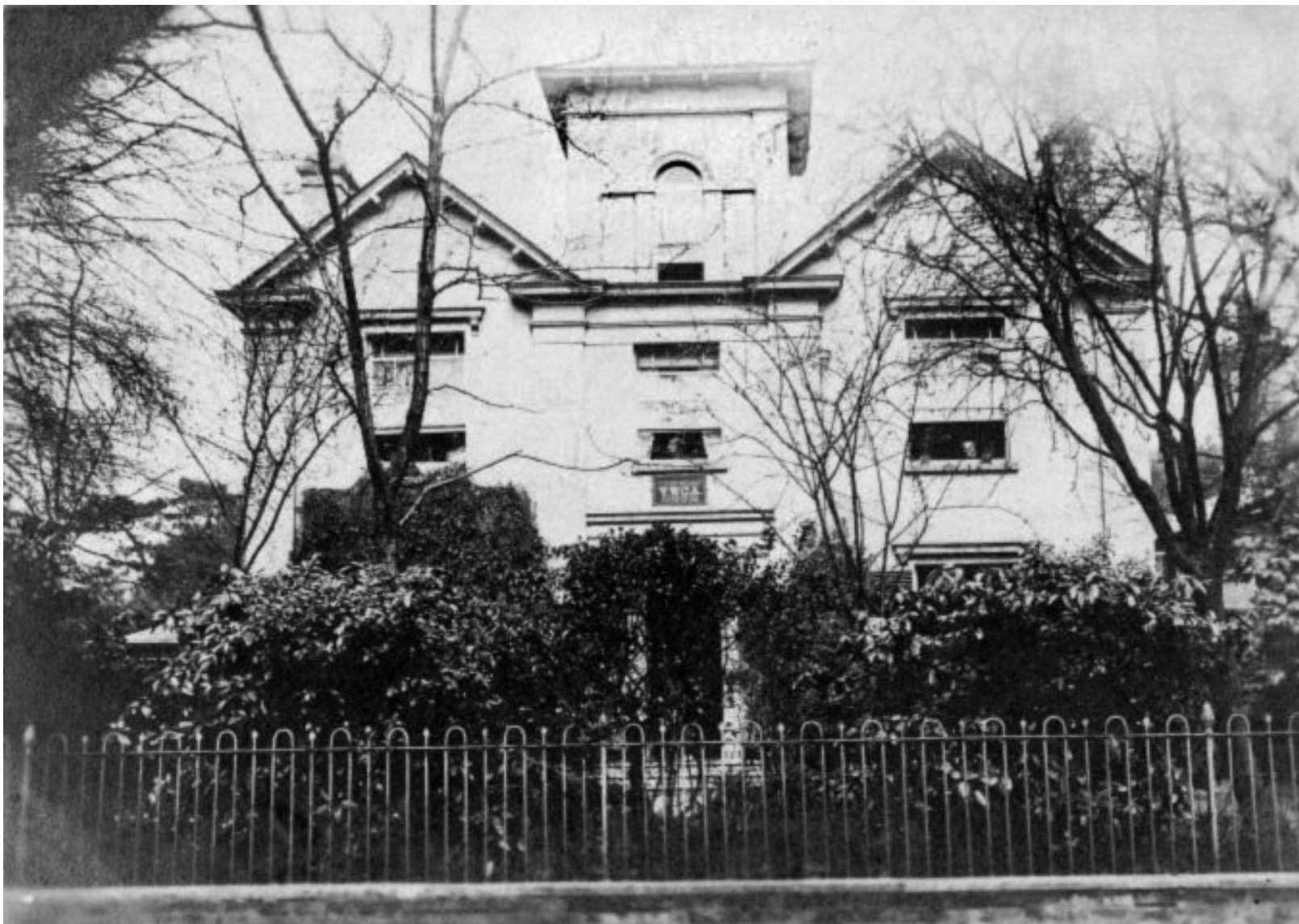


Westover Villas ... 5 and 6



'Close up' frontal views photos of Westover Villas numbers 5 & 6 - like those of numbers 3 and 4 - seem to be very rare. The left hand view show the 2 villas, in this case detached and quite different from each other. Both have Italianate towers, although not at each end, as in the semi-detached villas. This 'long shot' dates from around 1860. The right hand image is derived from William Day's aerial photo of the rear of the villas, taken from the scaffolding built to erect the spire of St. Peter's. This dates the photo to c. 1880, so later than the other photo. It does illustrate how extensive some of the rear parts of the villas were. Probably not originally, but as time passed and extensions were added.... I like to think we can assume the front elevations probably still retained their elegance!

(Click on the link to return to the home page: <https://wev.jp137.com>)



*Local historian Paul Miles has discovered this fine postcard image of **number 5** which shows a more detailed frontal view. The Villa is shown as being the location for Bournemouth YWCA, by the time of this photo. The postcard franking dates the card to 1908 – although the image may have been taken some time earlier of course. No. 5 had been demolished by 1912, to make way for the Westover Palace roller skating rink and tea gardens. The dates of the YWCA occupation are yet to be confirmed... Thanks for this one Paul*

(Click on the link to return to the home page: <https://wev.jp137.com>)